

Fighting Climate Change

By
Seimone Jurjis, Community Development Director
City of Newport Beach

April 6, 2021





Wave action to combat storm surge and wave action



July 2020







BALBOA BEACH TREATS
Coca-Cola
FROZEN BANANAS
BALBOA BARS
HOT DOGS / CORN DOGS

Donuts

PRINT
GIFTS
BEACH
SUNGLASSES

PIZZA SPECIAL

2 Slices of pepperoni or cheese & a medium soda
\$6.75 +tax



1/2 lb
Hot dog
\$8.75



Sandwich
\$10.75

★ **COFFEE** ★

ICED COFFEE

⊕ **HOT TEA** ⊕

Hot Chocolate

HOT APPLE CIDER

softserve ice cream
vanilla chocolate swirl

Ice Cream Float
coke rootbeer orange sprite

Waffle
com

Purple
Cov
Floa



Mi



AWAY AT OWNERS EXPENSE
SEC. 2265B C.V.C.
FOR TOWED CARS CALL
673-2211



Not Just Sea Level Rise



What are Local Governments Doing?

- Adopting policies in the city's General Plan to address climate change and green house gas emissions.

And / Or

- Adopting a Climate Action Plan

What is the General Plan?



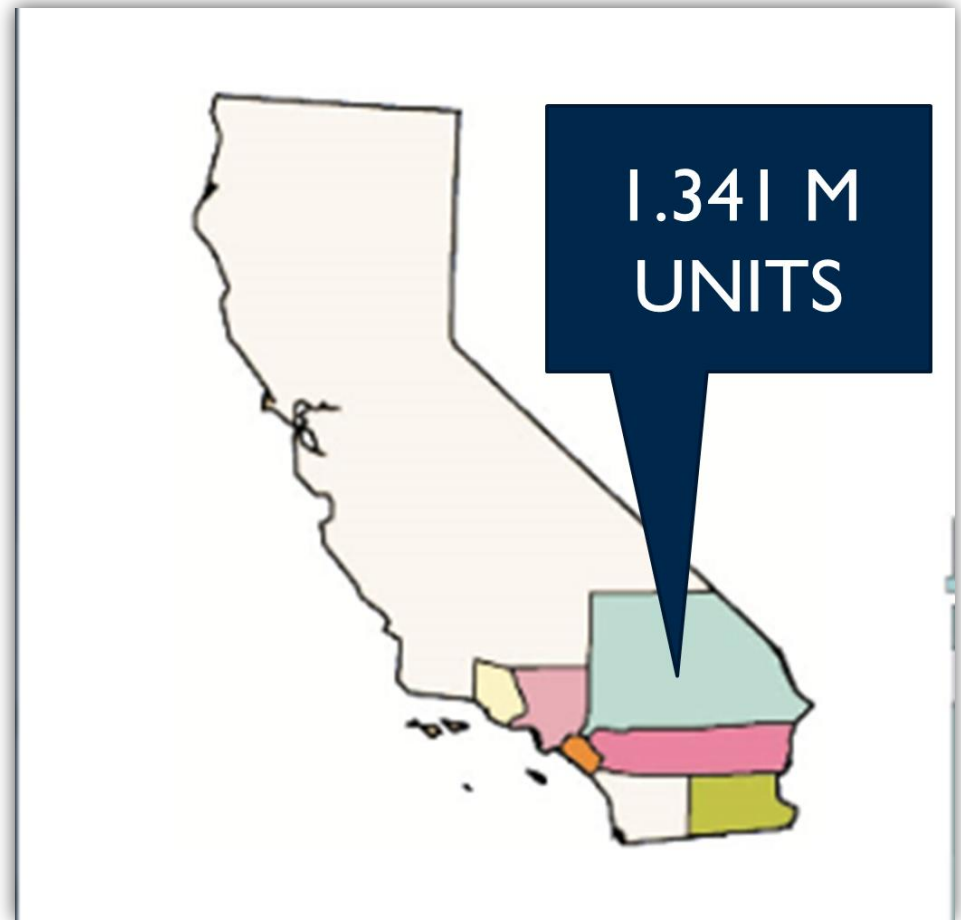
- It establishes the community's vision of its future
- It provides a long-range blueprint for development
- It contains 10 elements (6 State required)

Regional Housing Needs Assessment

1,341,000 Housing Units must be planned for 2021-2029 cycle

Housing Units / County

Los Angeles County –	812,060
Orange –	183,861
Riverside –	167,351
San Bernardino –	138,110
Ventura –	24,452

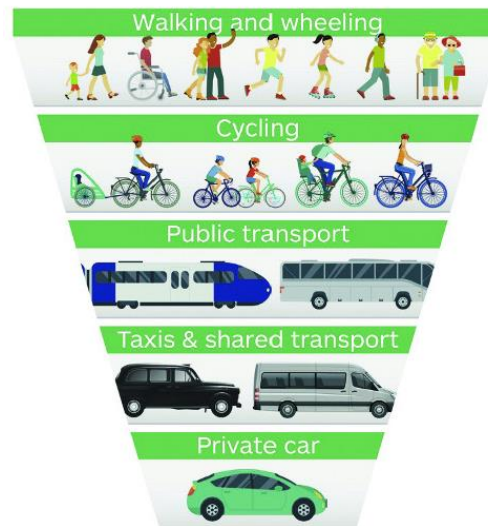


What are Local Governments Doing?

Policies:

- Reduce vehicle miles traveled (VMT)
- Reduce carbon footprint (alternate energy)
- Develop a resilient community

Prioritising Sustainable Transport



Short List of Example:

1. Locate housing close to employment / trans.
2. Encourage telework / carpool programs
3. Install more public EV charging stations
4. Encourage seasonal shuttle service
5. Expand bicycle trails and lanes
6. Pedestrian bridges & connectivity

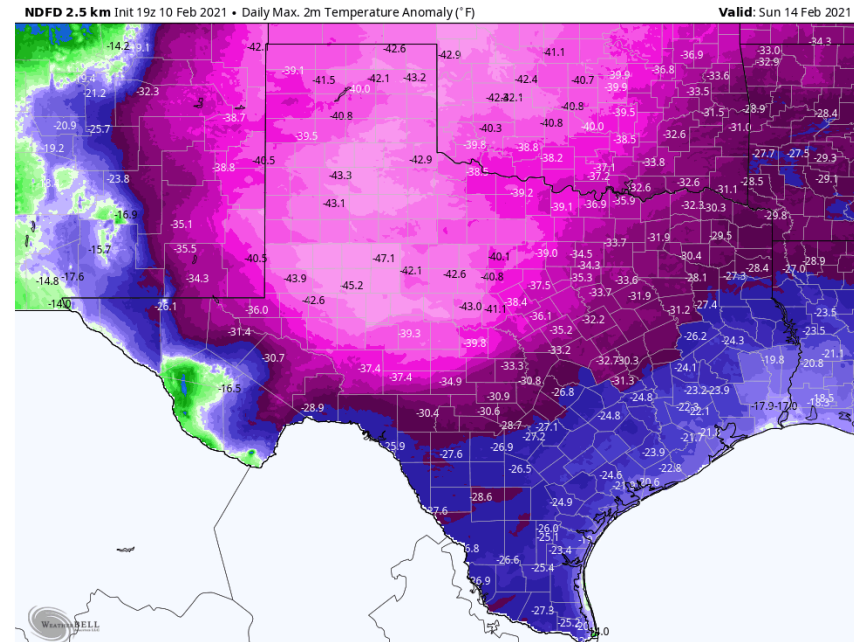


Prepared and Resilient Community

Cities must continue to be prepared for:

1. Rising seas and tides
2. Temperature fluctuations
3. Fire season

Where are we vulnerable??



Examples of a Resilient Community


- ❖ **Raise sea walls**
- ❖ **Raising pad elevations for new development**
- ❖ **Reduce green fuel and brush**



Raising Heights



Challenges & Solutions

- Public engagement & dialogue
- Money “” for capitol improvements
- Time to implement



Take Away for Local Government

- **Adopt policies that reduce green house gas**
- **Be prepared and plan to be a resilient community**



Thank You & Questions

For more information contact:

Seimone Jurjis, Community Development Director

City of Newport Beach

sjurjis@newportbeachca.gov

